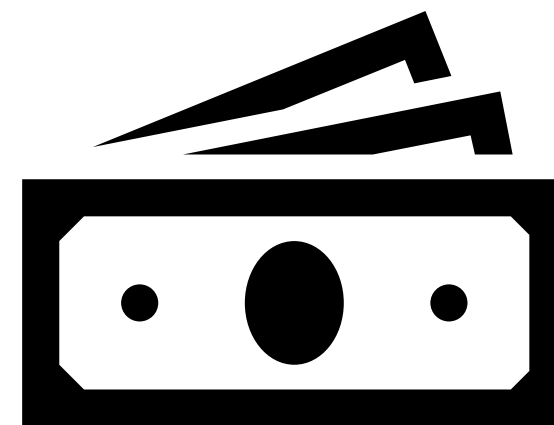
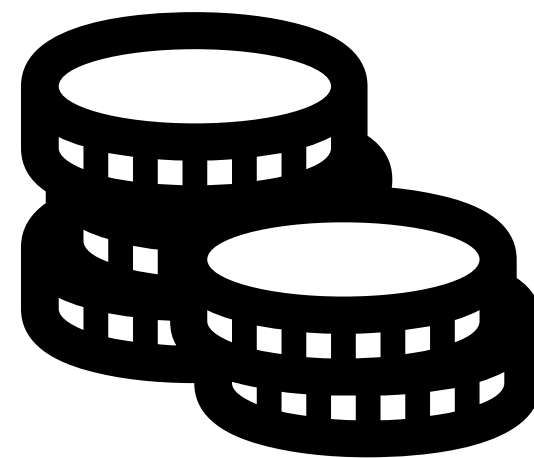
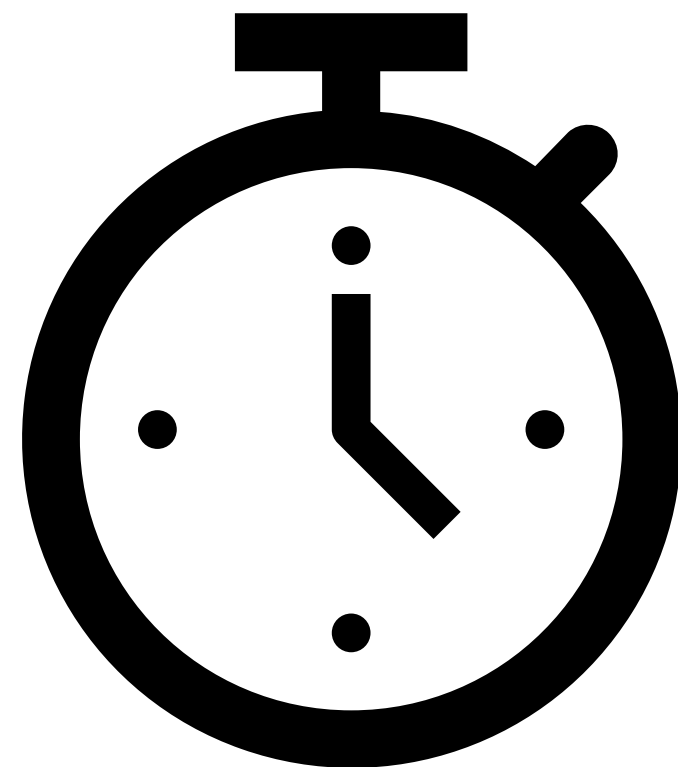


Simulation: Are We Clear With Our Objectives?

Neeraj Mehra, MD, FRCSC
Department of Obstetrics & Gynecology
University of British Columbia

ESS/OSS Program
Banff 2020

...and i should care,
why?



Objectives

By the end of this presentation you will be able to

1. Identify how simulation can be optimally utilized for clinical education and hospital quality improvement
2. Understand the utility of having clear objectives (either educational or for quality improvement)
3. Develop and introductory approach to using simulation in your own institution.

What is your objective?



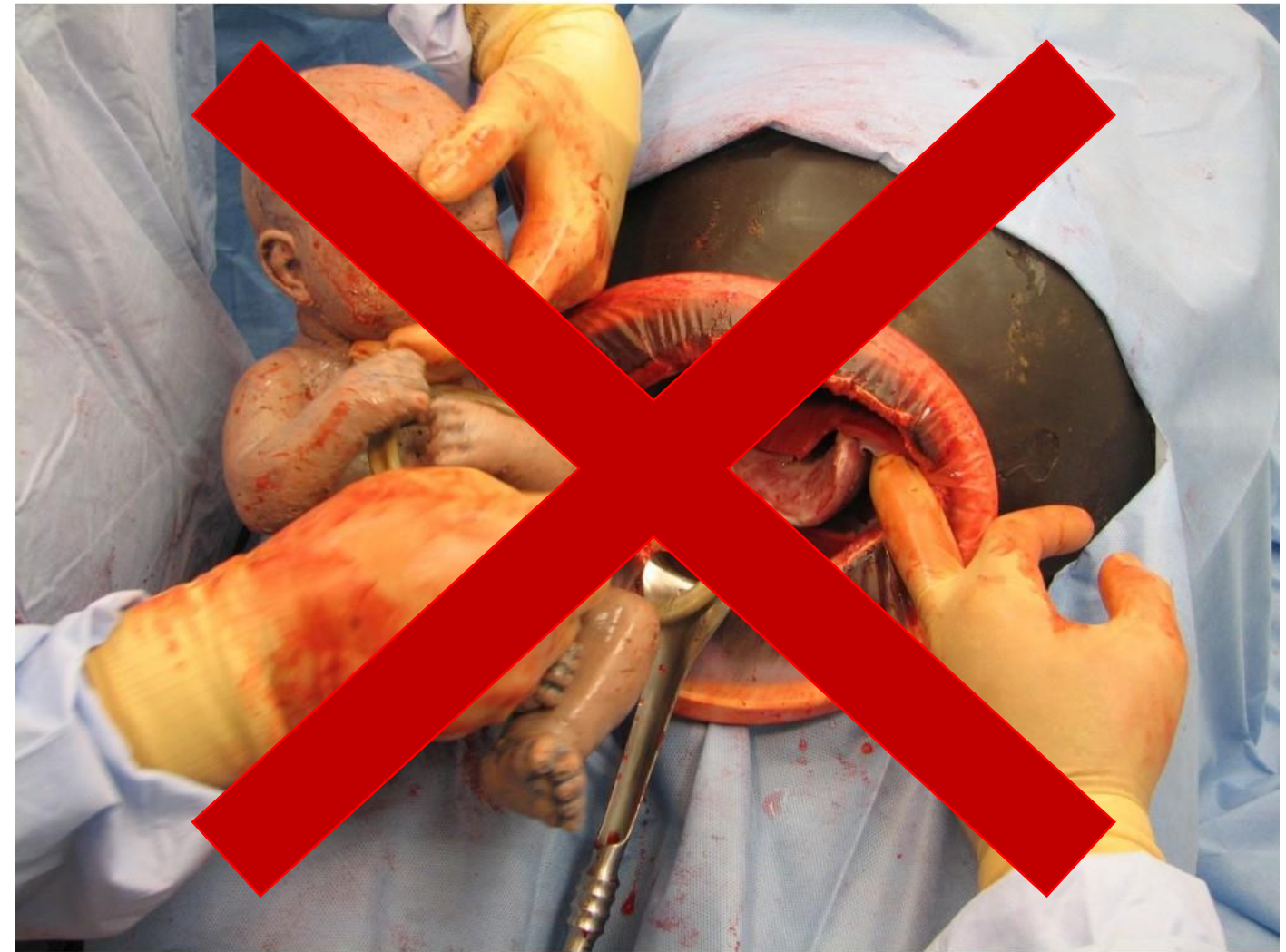
Is your objective SMART?



Is simulation the best tool?



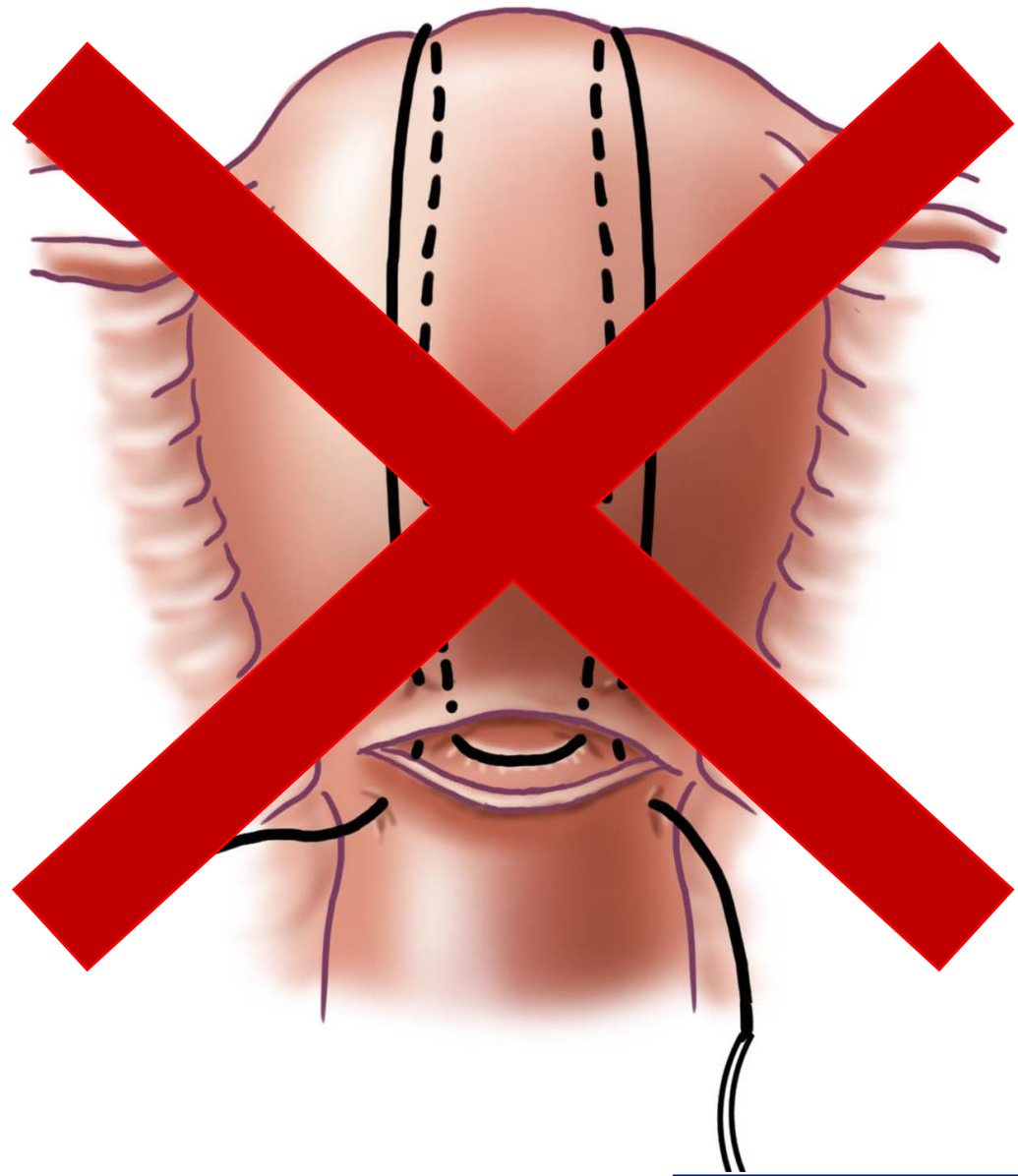
Which simulation is best?



What is your objective?



Clinical Situations



What is your objective?



Surgical Procedures

Critical Patient Safety Event involving a Massive PPH in the OR

- 1. Roles & responsibilities of each team member were ambiguous and poorly defined when responding to massive obstetrical hemorrhage**

Clearly define the roles and responsibilities of each team member who is involved in the management of a massive PPH

- 2. Hospital system deficiencies impeded the ability of team to respond on efficiently to obstetrical haemorrhage (Massive Transfusion)**

Identify and remove latent safety threats that may impair management of a massive PPH

What is your
objective?



Is your objective
SMART?



Your goal should be as specific as possible and answer the questions: **What** is your goal? **How** often or how much? **Where** will it take place?



How will you measure your goal? Measurement will give you **specific feedback** and hold you accountable.



Goals should push you, but it is important that they are **achievable**. Are your goals attainable?



Is your **goal and timeframe realistic** for the goal you have established?



Do you have a **timeframe** listed in your SMART goal? This helps you be **accountable** and helps in **motivation**.

What is your objective?



```
graph TD; A[What is your objective?] --> B[Is your objective SMART?]; B --> C[Is simulation the best tool?];
```

Is your objective SMART?

Is simulation the best tool?

Other Options

- ☐ Didactic Lecture
- ☐ Online Module
- ☐ Workshop
- ☐ Small group session
- ☐ Mentorship

Need **MODELS** to simulate

Model represents the key characteristics or behaviours of the selected system or process



Simulation definitions

- **Simulation**
 - Is the imitation of the operation of a real-world process
 - Is an educational strategy that helps learners acquire essential healthcare competencies through repetitive practice in technology-enhanced environments that mimic clinical realities
- **Debriefing** is the process where by the healthcare team can reexamine the clinical encounter to foster the development of clinical reasoning, critical thinking, judgment skills, teamwork and communication through a reflective learning process

What is your objective?



Is your objective SMART?



Is simulation the best tool?



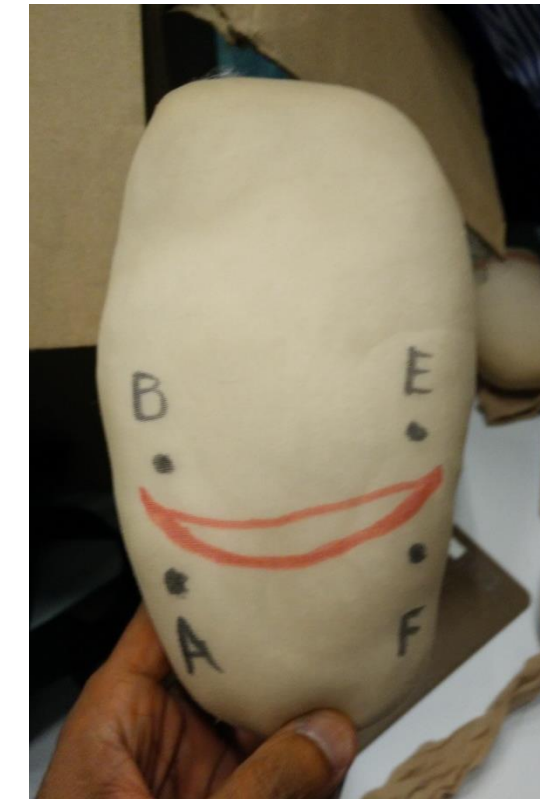
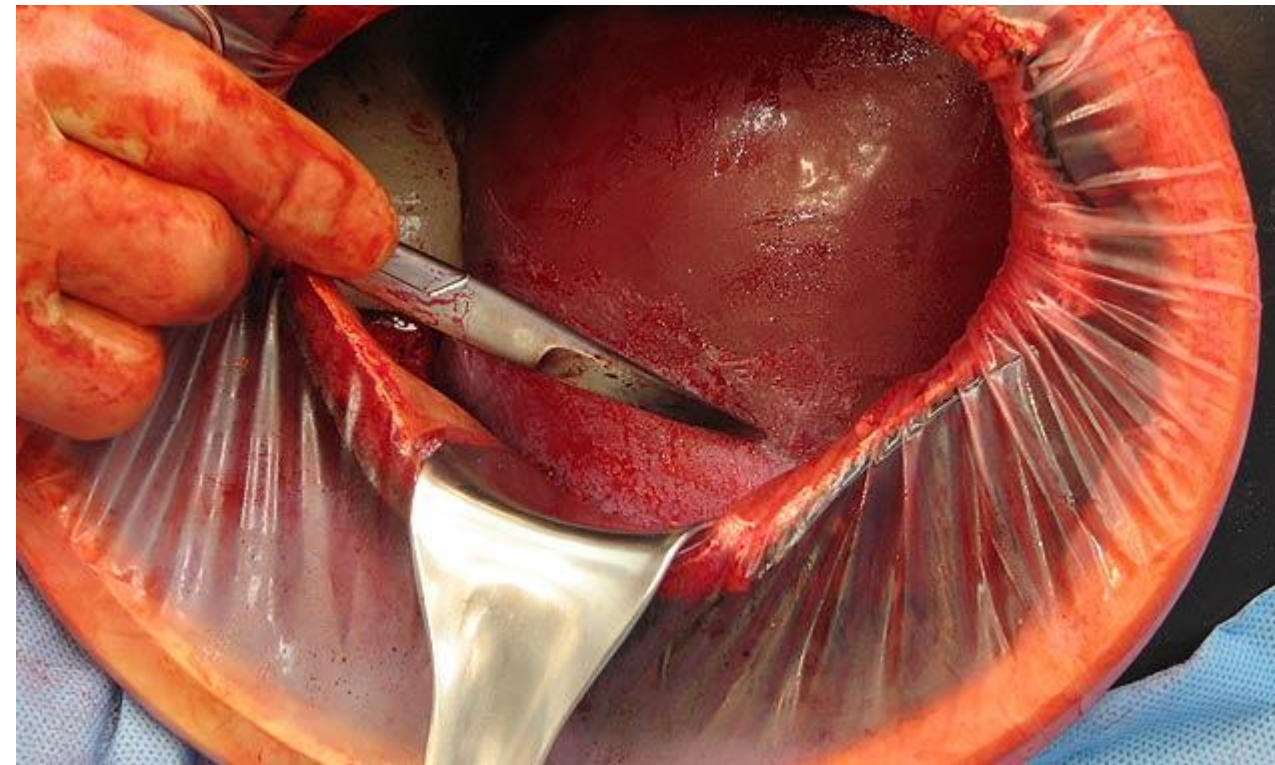
Which simulation is best?



Simulation definitions

Procedural Simulation

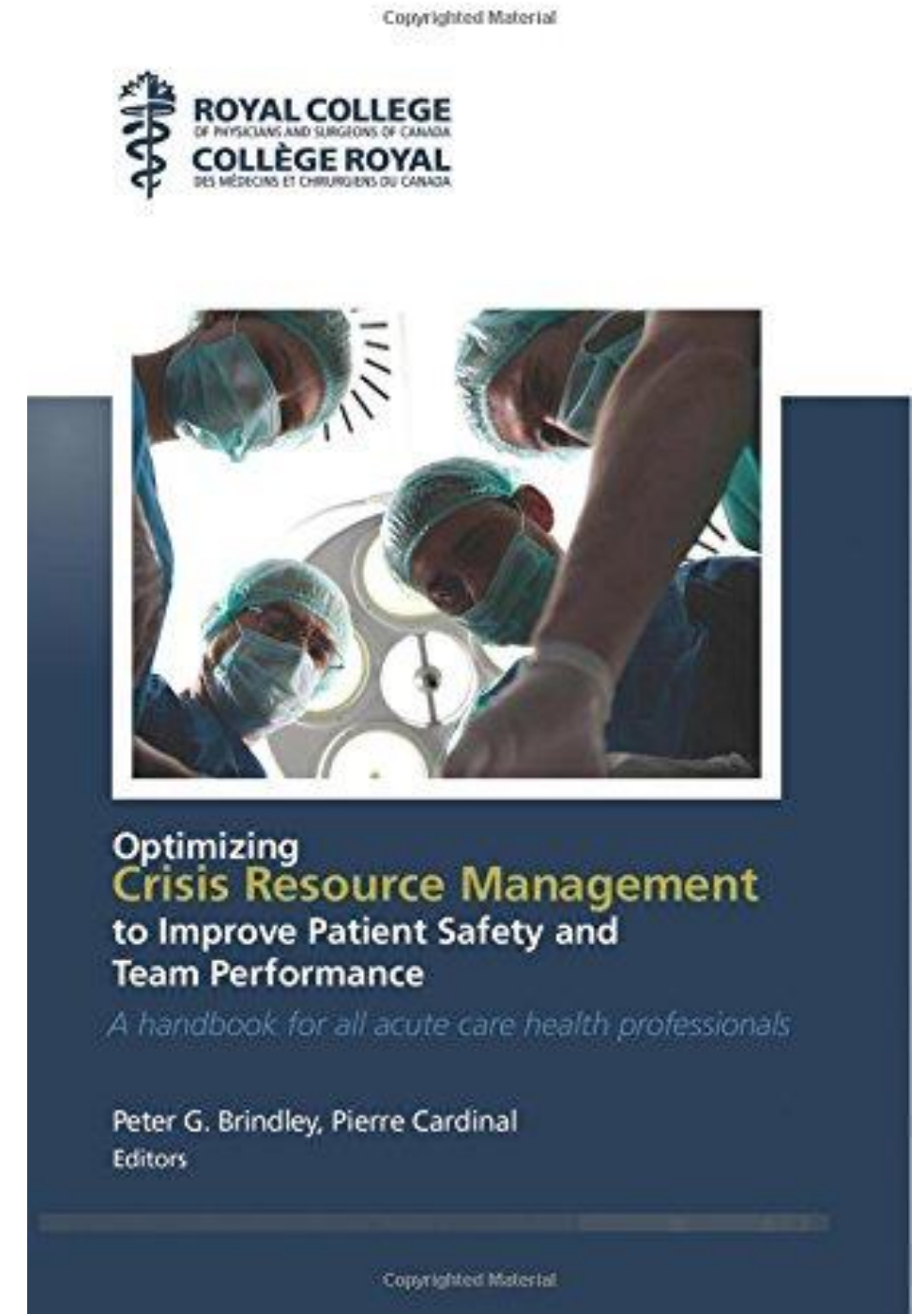
- The use of a simulation modality (for example, task trainer, manikin, computer) to assist in the process of learning to complete a technical skill or a procedure
- NB: Consider using different models to teach a different part of the procedure and linked to a specific objective



Simulation definitions

Theatre-based simulation

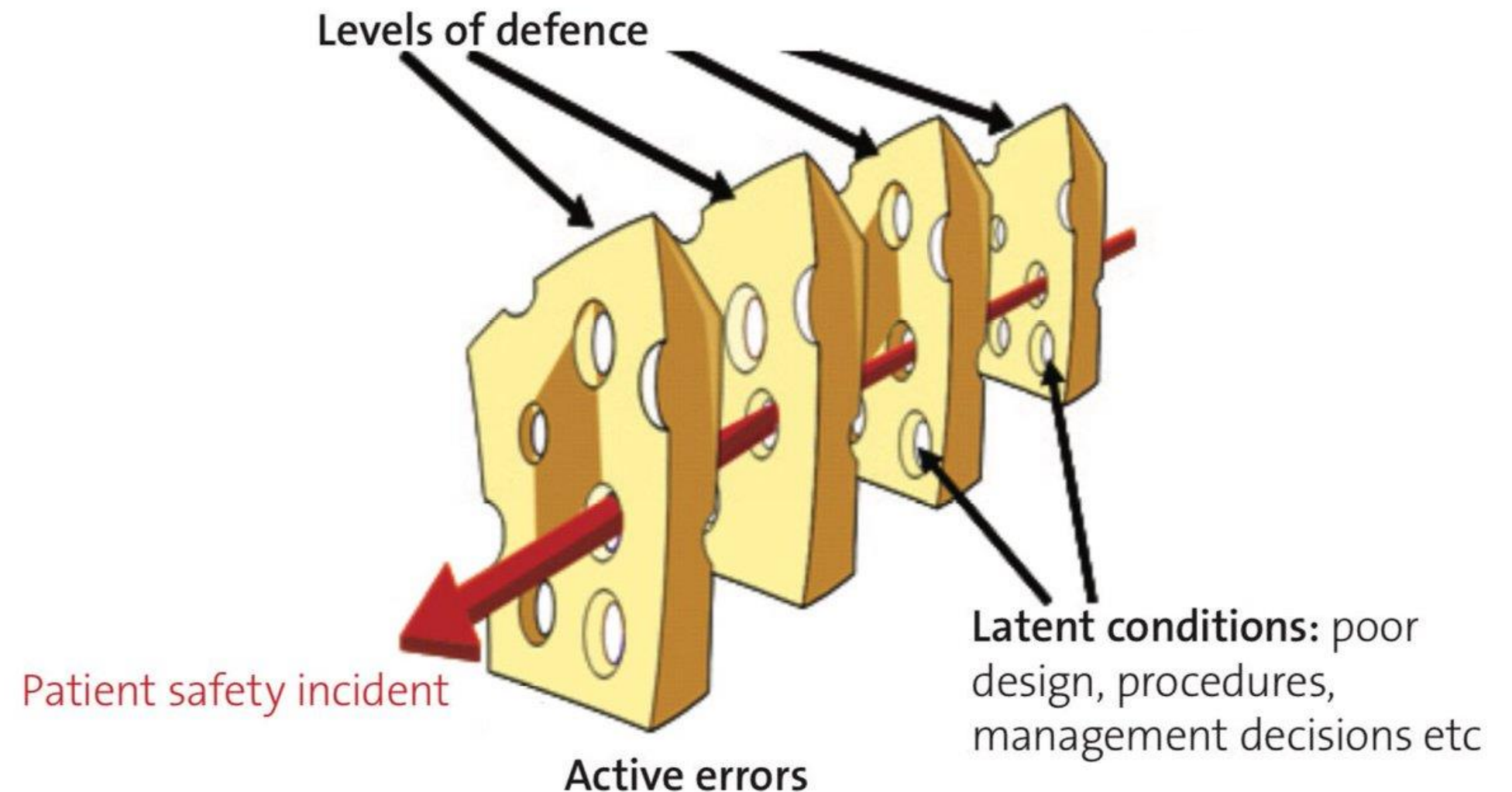
- Simulation involving preordained series of actions based on the time and sequence of specific events.
- Follows a script which provides a detailed plan of action for a simulation case; similar to a theatrical play.
- Optimal for teaching CRM and Non-technical skills



Simulation definitions

Process Simulation

- A simulation in which the process is considered more important than the outcome.
- Best for identifying latent safety threats



Simulation definitions

- In Situ Simulation is simulation that takes place in the actual working environment and involving those who work there
- Distinct from Centre-Based Simulation, which takes place in a simulation space separate from the work environment





An actor + Mama Nathalie & IV arm



Sim Mom simulator

Clearly define the roles and responsibilities of each team member who is involved in the management of a massive PPH

Identify and remove latent safety threats that may impair management of a massive PPH

Large Scale In Situ Simulation

- Focus on process and identification of latent safety threats
- Mock patient was created in the hospital computerized system to understand the interface between Labour and Delivery, OR, Transfusion Medicine and Laboratory Services during an emergency
- Multiprofessional teams: Nurses, Anaesthesiologists, Obstetricians, Respiratory Therapists, Unit clerk, Transfusion Medicine personnel, Laboratory Services personnel
- Focused debrief following simulation





Delivery of placenta & initial management of *Postpartum Haemorrhage*



Transfer to the OR



Activation & management of a *Massive Obstetrical Blood Transfusion*



- Development of roles and responsibilities protocol for management of Massive PPH
- Ability for team members to adequately perform their role and responsibilities was inhibited by several Latent Safety Threats that were identified

Anesthesiologist
1. Activate Obstetric Massive Transfusion Protocol <ul style="list-style-type: none"> • State to team: "Activating Obstetric Massive Transfusion Protocol" • Request 2nd Anesthesiologist on call to assist in OR <p>After initial MTP pack, order blood components as required:</p> <ul style="list-style-type: none"> • 6 U RBC's and 4 U FFP's prepared in case of continued bleeding and poor hemostasis • 4 U FP if INR >1.5 • 1 U Plt if count is <50 x10⁹/L • 10 U cryoprecipitate if fibrinogen is <1.5 g/L
2. Establish hemodynamic monitoring & access as needed: <ul style="list-style-type: none"> • Arterial line • Central line
3. Order blood work <ul style="list-style-type: none"> • Repeat CBC • Coagulation panel • Lytes - include Ca²⁺, ionized Ca²⁺ and Mg²⁺ • Urea, Creatinine • ABG every 45 – 60 min
4. Consider additional assistance <ul style="list-style-type: none"> • Consider calling Intensivist • Consider transferring patient to St Paul's or VGH

Circulating RN
1. Activate Obstetric Massive Transfusion Protocol and note time <ul style="list-style-type: none"> • Call Charge Nurse • State "Obstetric Massive Transfusion Protocol activated" • Request 2nd Anesthesiologist on call to be paged for assistance in OR • Request 2 additional RN's (Transfusion RN & Assistant Circulating RN) to OR
2. Assign/Reassign RN roles of Primary & Secondary RN to Runner RN, Transfusion RN & Assistant Circulating RN
3. Monitor blood loss <ul style="list-style-type: none"> • Weigh & count sponges/pads/linen • Assess suction canister volume • Assess for coagulation of blood • Communicate blood loss to Assistant Circulating RN



What is your objective?

Clear Objective

Is your objective SMART?

YES

Is simulation the best tool?

YES

Which simulation is best?



I don't know



NO



Other education
modalities




Simulation
Design





IF YOU BUILD IT,
THEY WILL COME.



Myth #1: If you build it,
they will come

Simulation is only as good as the objectives behind it

