



www.cma.ca/cjrm

SCIENTIFIC EDITOR
RÉDACTEUR SCIENTIFIQUE
JOHN WOOTTON, MD
Shawville, Que.

MANAGING EDITOR
DIRECTRICE DE LA RÉDACTION
SUZANNE KINGSMILL, BA, BSc, MSc
Shawville, Que.

ASSISTANT EDITORS
RÉDACTEURS ADJOINTS

MARTIN BENFEY, MD
Fort-Coulonge, Que.

GORDON BROCK, MD
Temiscaming, Que.

MIKE GREEN, MD
Moose Factory, Ont.

STUART IGLESIAS, MD
Hinton, Alta.

ROBERT MARTEL, MD
Arichat, NS

JAMES ROURKE, MD
St. John's, Nfld.

CARL WHITESIDE, MD
Vancouver, BC

The *Canadian Journal of Rural Medicine* (CJRM) is owned by the Society of Rural Physicians of Canada (SRPC). It appears in Winter, Spring, Summer and Fall. It is printed by Dolco Printing, Ottawa.

Address all correspondence to:
Editor
Canadian Journal of Rural Medicine
Box 1086
Shawville QC J0X 2Y0
tel 819 647-2972, fax 819 647-9972
cjrm@lino.com

CJRM is indexed in *Index Medicus* and MEDLINE.

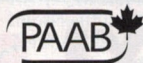
"Instructions for Authors" and "Service Information": see www.cma.ca/cjrm

Publications Mail Agreement no. 40064383; Return undeliverable Canadian copies and subscription address changes to: CMA Member Service Centre, CJRM, 1867 Alta Vista Dr., Ottawa ON K1G 3Y6; 888 855-2555, cmamsc@cma.ca. USPS #015-606. USPS periodical postage paid at Champlain, NY. Return other undeliverable copies to IMS of NY, 100 Walnut St., #1, PO Box 1518 Champlain NY 12919-1518.

ISSN 12037796

All prescription drug advertisements have been cleared by the Pharmaceutical Advertising Advisory Board.

Printed on acid-free paper from inception.



© 2005 Society of Rural Physicians of Canada

Canadian Journal

Journal canadien

of
**Rural
Medicine**

de la
**médecine
rurale**

VOL. 10, No. 2, SPRING / PRINTEMPS 2005

EDITORIALS / ÉDITORIAUX

- 77 The incentive gravy train — *John Wootton, MD*
- 78 Le filon des incitatifs — *John Wootton, MD*
- 79 President's message. Babies in the bush — *Trina M. Larsen Soles, MD*
- 80 Message de la présidente. Campagne fertile — *Trina M. Larsen Soles, MD*

ORIGINAL ARTICLES / ARTICLES ORIGINAUX

- 81 Prevalence of specific cardiovascular disease risk factors in young Newfoundland and Labrador adults living in urban and rural communities — *Susan M. Kettle, MSc, RD; Barbara V. Roebobhan, PhD, RD; Roy West, PhD*
- 86 Inappropriate use of antibiotics for acute respiratory tract infections in a rural emergency department — *Graham Worrall, MB BS, MSc, FRCPC, MRCGP; Barbara Young, MSc; Valerie Knight, HRT*
- 89 Understanding the role of nurse practitioners in Canada — *Andrew Worster, MD, CCFP(EM), MSc, FCFP; Arlene Sarco, RN, MSN, ACNP, ENC(C); Christine Thrasher, RN(EC), MScN, NP, PhD(c); Christopher Fernandes, MD, FACEP; Elaine Chemeris RN, BScN, MN*
- 95 Use of traditional Mi'kmaq medicine among patients at a First Nations community health centre — *Sarah Jane Cook, BSc Hon*

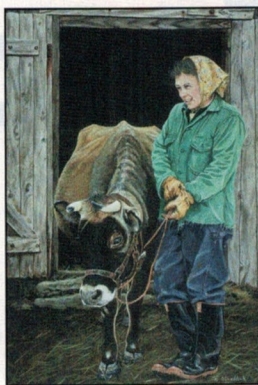
THE PRACTITIONER / LE PRATICIEN

- 100 Diagnosing pulmonary embolism in a rural setting — *John Bosomworth, MD, CCFP, FCFP*

NORVASC* is a long-acting dihydropyridine calcium channel blocker.
Product Monograph available on request from
Pfizer Canada Inc., Kirkland, Quebec H9J 2M5

Pfizer
Member
PRAAB
R&D

For prescribing information see page 121



Barb's Cow

36" x 24" acrylic on canvas

Al Chaddock
Halifax, NS
www.alchaddock.com

© 1999 Al Chaddock

ASSOCIATION
MÉDICALE
CANADIENNE



CANADIAN
MEDICAL
ASSOCIATION

PUBLISHER / ÉDITEUR
CMA MEDIA INC. / AMC MÉDIA INC.

CJRM is published for the SRPC by CMA Media Inc., 1867 Alta Vista Dr., Ottawa ON K1G 3Y6. The SRPC, the Canadian Medical Association (CMA) and CMA Media Inc. assume no responsibility or liability for damages arising from any error or omission, or from the use of any information or advice contained in the journal, including articles, editorials, case reports, reviews, book reviews, letters and advertisements. All editorial matter in CJRM represents the opinions of the authors and not necessarily those of the SRPC, the CMA or CMA Media Inc.

PRESIDENT / PRÉSIDENT
GRAHAM MORRIS

ASSOCIATE DIRECTOR
DIRECTRICE ASSOCIÉE
GLENDA PROCTOR, MSc, ELS

EDITOR / RÉDACTRICE
JENNIFER E. RAICHE
800 663-7336 x2114
jennifer.raiche@cma.ca

PRODUCTION
KATHRYN A. FREAMO
NICOLE BARBEAU, CLARA WALKER

ONLINE PUBLISHING
PUBLICATION EN DIRECT
NATASHA KLASSEN
JEREMY SIMS, SHIRLEY WADDELL

CLASSIFIED ADVERTISING
ANNONCES CLASSÉES
BEVERLEY KIRKPATRICK
DEBORAH RODD, TRACY HUCKABONE

DISPLAY ADVERTISING
ANNONCES PUBLICITAIRES
NANCY POPE
advertising@cma.ca

MARKETING AND ADVERTISING SALES
MARKETING ET PUBLICITÉ
KEITH COMMUNICATIONS INC.
info@keithhealthcare.com
Toronto: 905 278-6700; 800 661-5004
fax 905 278-4850
Montréal: 514 624-6979; 877 761-0447
fax 514 624-6707

PODIUM: DOCTORS SPEAK OUT LA PAROLE AUX MÉDECINS

107 A strategic plan for eliminating rural hospital services through the process of regionalization — *Trina M. Larsen Soles, MD*

OUT BEHIND THE BARN / DANS LE FEU DE L'ACTION

109 CMA Web site — Drug information
— *Barrie McCombs, MD, CCFP, CCFP(EM)*

NEWS / ACTUALITÉS

111 The first SRPC Residents' Page! — *Jean Warneboldt, MD*

112 INSTRUCTIONS FOR AUTHORS DIRECTIVES AUX AUTEURS

113 SERVICE INFORMATION

126 CLASSIFIED ADVERTISING / ANNONCES CLASSÉES

RENSEIGNEMENTS GÉNÉRAUX

[Voir le numéro d'automne 2004 ou visitez www.cma.ca/cjrm]

IT'S NEVER TOO SOON TO MARK YOUR CALENDARS!
THE SRPC'S
14TH ANNUAL RURAL AND REMOTE MEDICINE CONFERENCE
WILL BE HELD IN WINNIPEG IN THE SPRING OF 2006.
PLEASE JOIN US IN THE LAND OF THE PRAIRIE CROCUS.

ADVERTISERS' INDEX / INDEX DES ANNONCEURS

BAYER HEALTHCARE

Adalat XL 72

BOEHRINGER INGELHEIM

Spiriva 76

GLAXOSMITHKLINE

Avandia Inside Front Cover, 69

PFIZER CANADA INC.

Lipitor 70

Norvasc 71, Outside Back Cover

SANOFI AVENTIS

Altace Inside Back Cover

Plavix 74, 75

PRESCRIBING INFORMATION

Adalat XL 114

Altace 115

Avandia 118, 119, 120

Lipitor 122, 123

Norvasc 121

Plavix 124, 125

Spiriva 116, 117